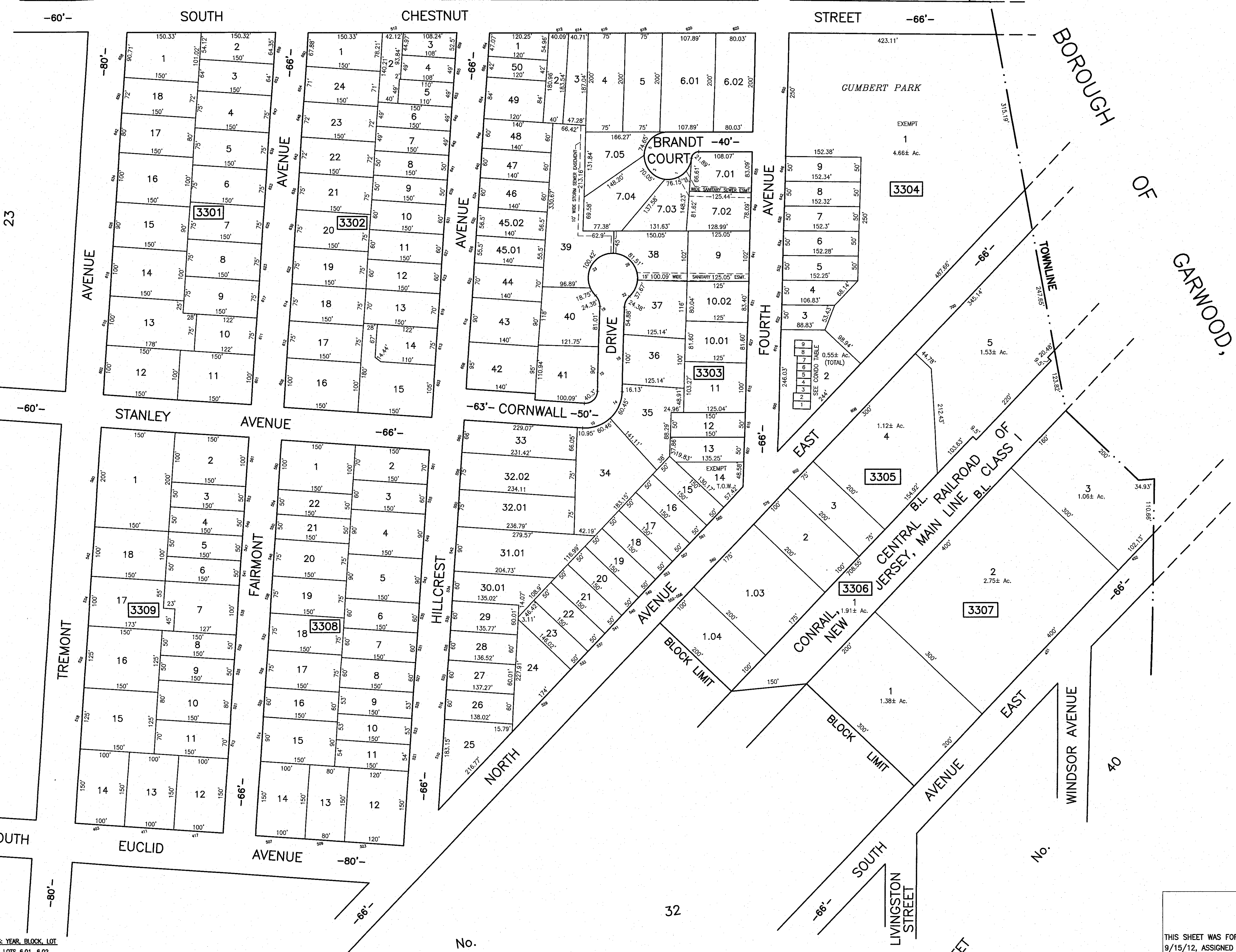
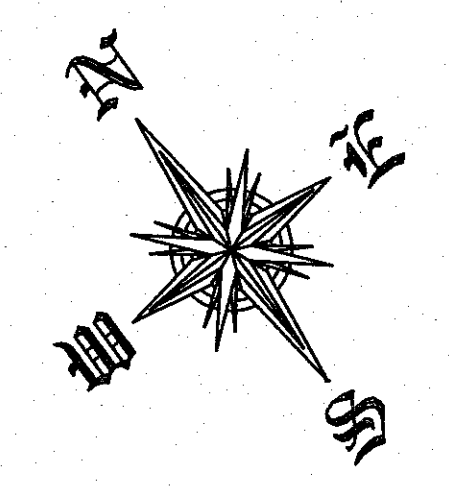


SHEET

No.

34



CONDOMINIUM TABLE

BLOCK	LOT	QUALIFIER	UNIT#	DIMENSIONS	AREA
3304	2	C0001	1	16'x35'	560 sf.
		C0002	2	16'x35'	560 sf.
		C0003	3	15'x29'	435 sf.
		C0004	4	15'x29'	435 sf.
		C0005	5	15'x29'	435 sf.
		C0006	6	15'x29'	435 sf.
		C0007	7	15'x29'	435 sf.
		C0008	8	16'x35'	560 sf.
		C0009	9	16'x35'	560 sf.

TAX MAP REVISIONS: YEAR, BLOCK, LOT

2020 : BLK. 3303, LOTS 6.01, 6.02
 2015 : BLK. 3303, LOTS 10.01, 10.02
 2013 : BLK. 3303, LOTS 7.01, 7.02, 7.03, 7.04, 7.05 (BRANDT CT.)
 2003 : BLK. 3303, LOTS 32.01, 32.02
 2001 : BLK. 3303, LOTS 45.01, 45.02
 1998 : BLK. 3305, LOT 1.04
 1994 : BLK. 3305, LOTS 1.01, 1.02, 1.03
 1992 : BLK. 3303, LOTS 30.01 & 31.01

THIS SHEET WAS FORMALLY CERTIFIED ON 9/15/12, ASSIGNED SERIAL # 1003, SIGNED BY JUDY MILLER, CTA AND SUE DAVISON, CTA

TAX MAP
TOWN OF WESTFIELD
UNION COUNTY NEW JERSEY
 SCALE: 1" = 100' SEPTEMBER 10, 2012
PAULO D. HORTA, PLS
TOWN SURVEYOR
 PUBLIC WORKS CENTER, 959 NORTH AVE., WEST WESTFIELD, NEW JERSEY, 07090